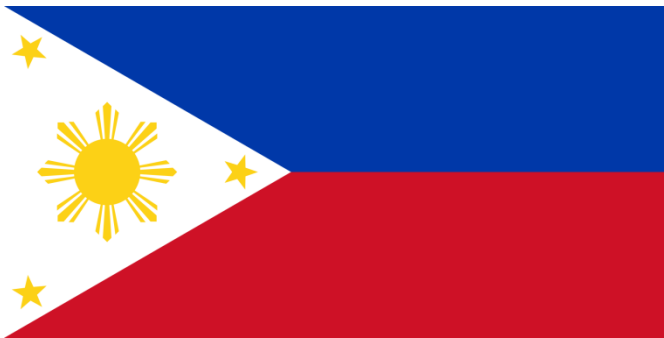




# Preparedness by the country at the risk of Lumpy skin disease (LSD) incursion



**ANTHONY C. BUCAD, DVM**

Veterinarian II

Bureau of Animal Industry

Department of Agriculture

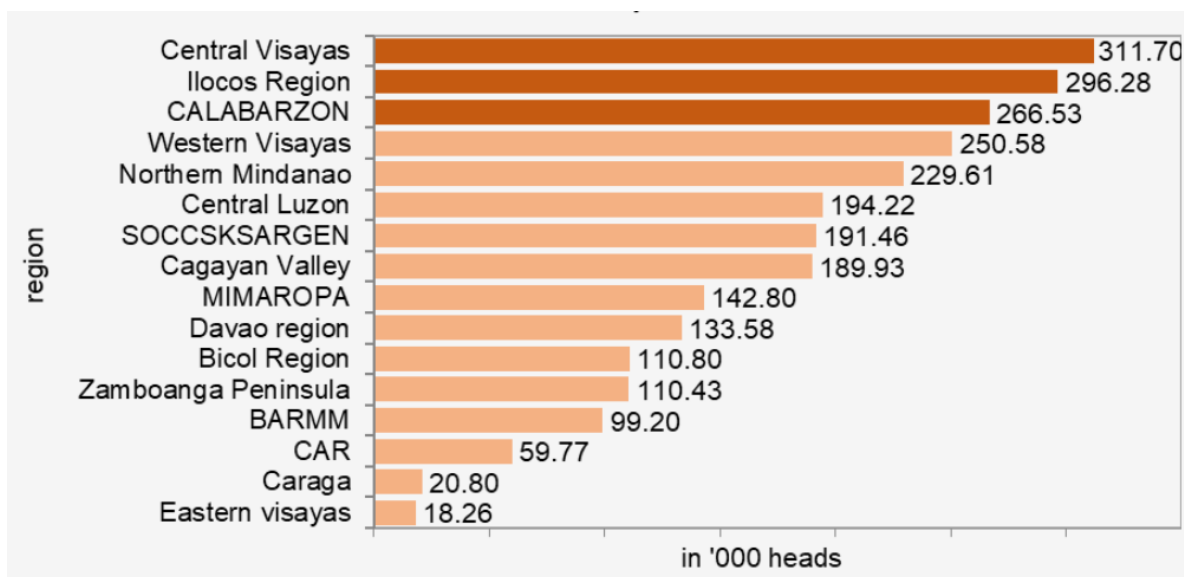


# Country Livestock Profile

## • Cattle Population

Total cattle inventory as of 1 January 2021 **2.63 million heads**

Distribution of Cattle Inventory by Region, Philippines



Source: Philippine Statistics Authority

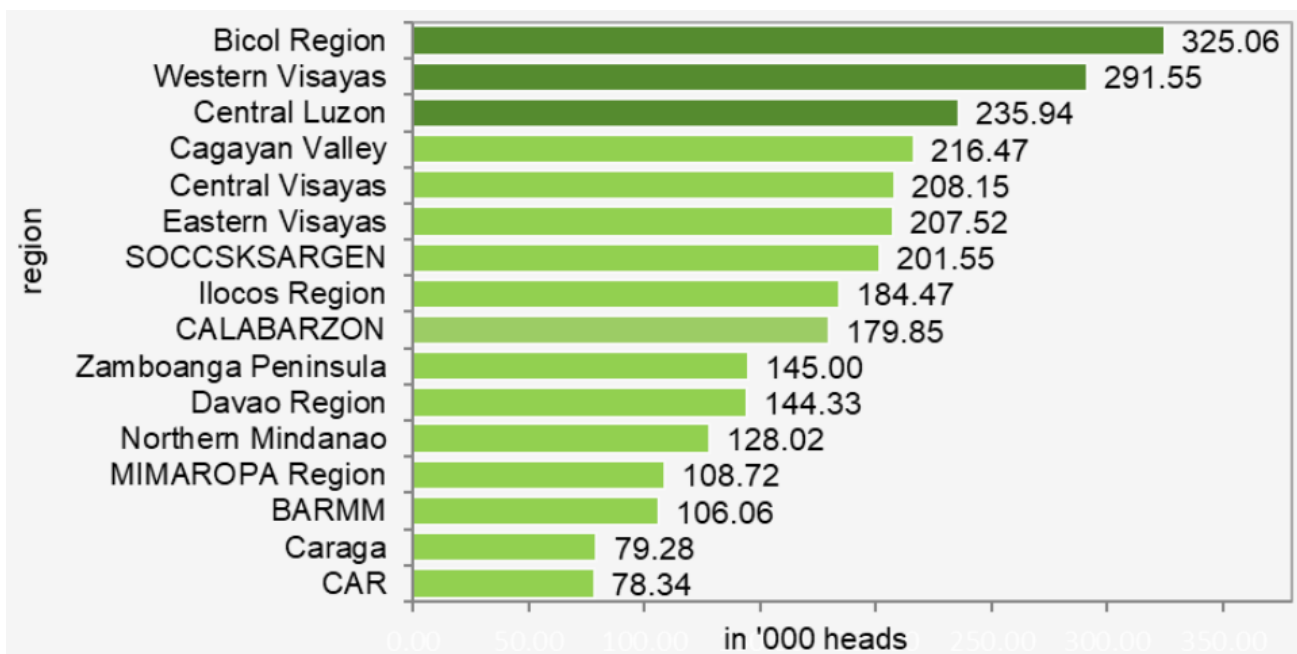


# Country Livestock Profile

## • Water Buffalo (Carabao) Population

Total carabao inventory as of 1 January 2021 is **2.84 million heads**

Distribution of Carabao Inventory by Region, Philippines



Source: Philippine Statistics Authority



# Country Livestock Profile

## Livestock Production System

- Meat, milk, draft
- Backyard/Smallhold Production
  - Traditional
- Commercial Production
  - Feedlot operation
  - Cow-calf operation

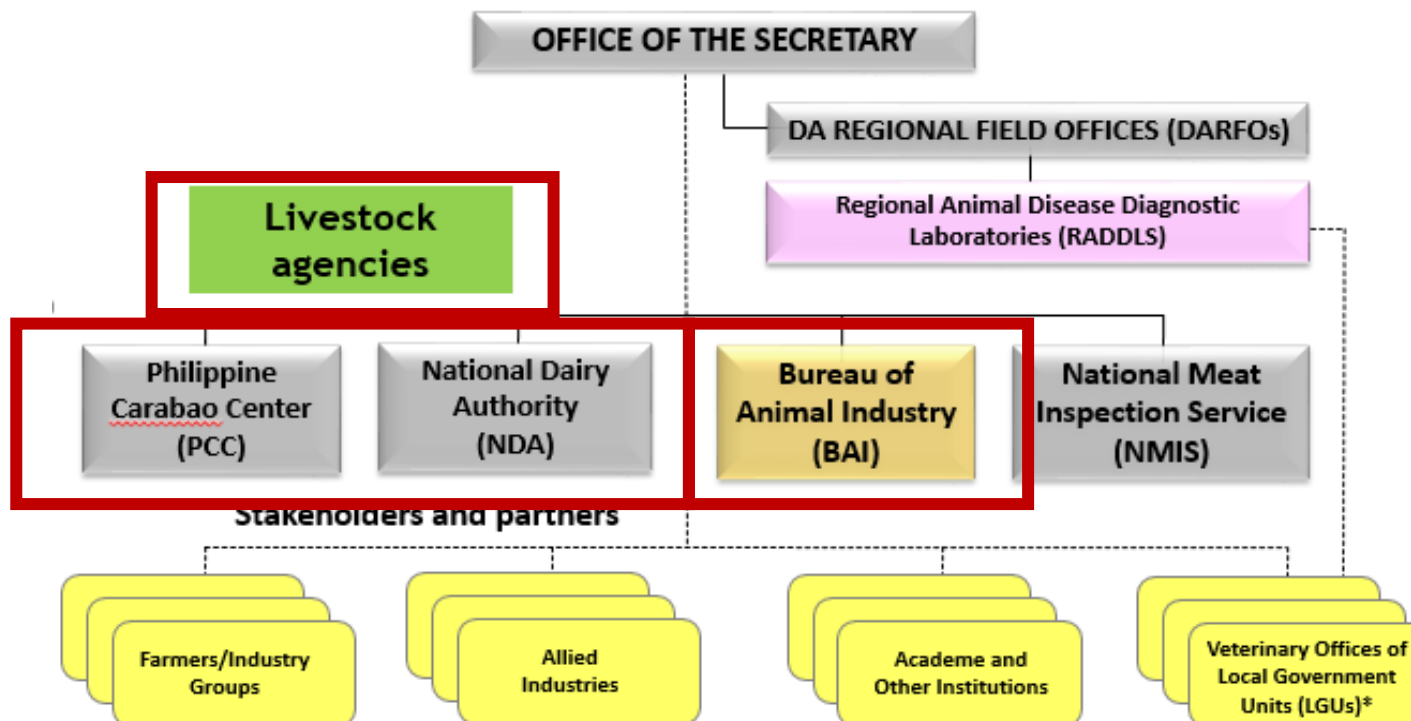


# Veterinary Services

## Organizational Structure

Abbreviated organogram to highlight livestock agencies

## Department of Agriculture (DA)



\* Under the Department of Interior and Local Government (DILG)



# Country Livestock Profile

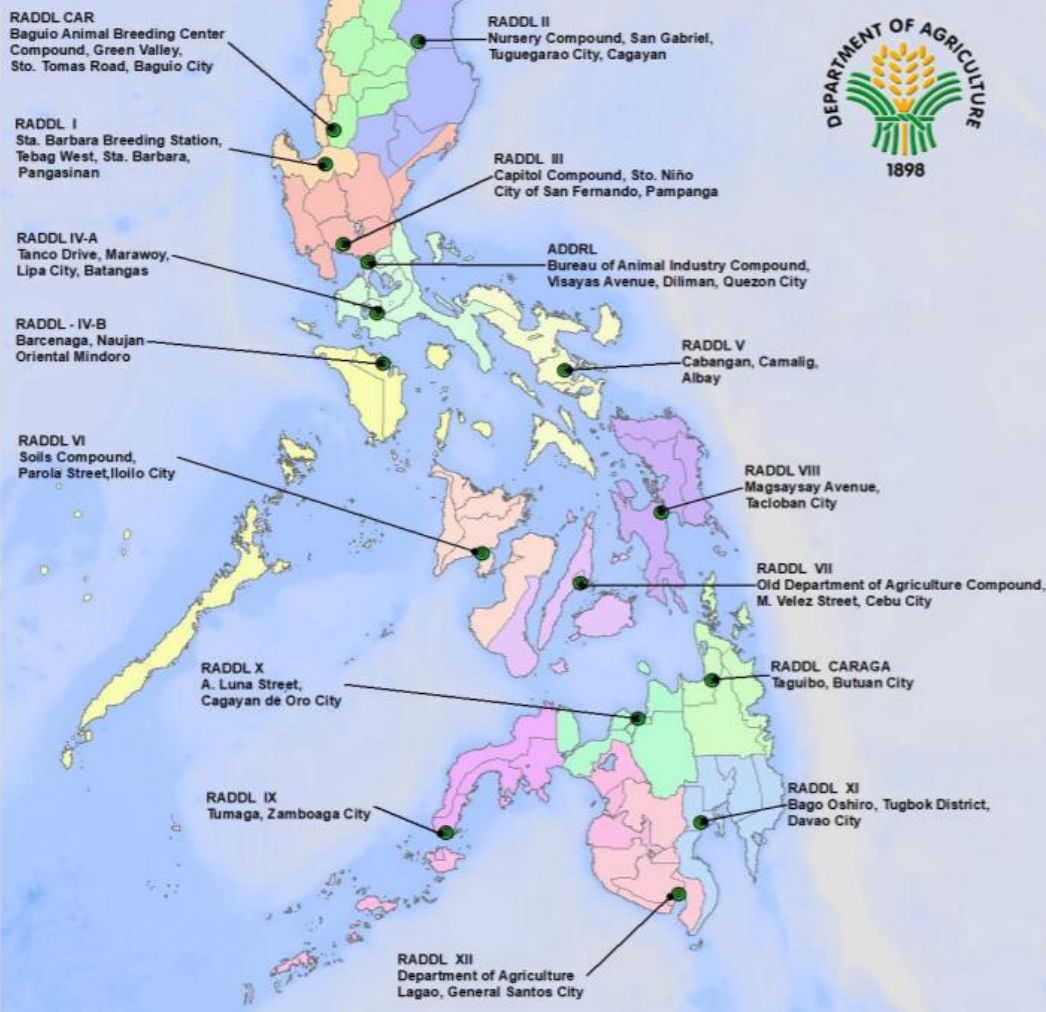
## Laboratory Support Services

### Department of Agriculture (DA)

- Animal Disease Diagnosis and Reference Laboratory (ADDRL)
- Regional Animal Disease Diagnostic Laboratories (RADDLs)

### Others:

- Provincial Animal Disease Diagnostic Laboratories (PADDLs)
- Research Institute for Tropical Medicine (Department of Health)





# LSD Preparedness

## Legislation and secondary policies

RA 3639 – creation of the Bureau of Animal Industry as the Veterinary Authority of the country

Department Circulars on the “Declaring the List of Notifiable Animal Disease”

Republic of the Philippines  
Department of Agriculture  
OFFICE OF THE SECRETARY  
Elliptical Road, Diliman  
Quezon City 1100, Philippines

April 18, 2018

ADMINISTRATIVE CIRCULAR  
No. 03  
Series of 2018

SUBJECT: **Cattle diseases and infections**

- Bovine anaplasmosis
- Bovine babesiosis
- Bovine genital campylobacteriosis
- Bovine spongiform encephalopathy
- Bovine tuberculosis
- Bovine viral diarrhoea
- Enzootic bovine leukosis
- Haemorrhagic septicaemia
- Infectious bovine rhinotracheitis/ infectious pustular vulvovaginitis
- Infection with *Mycoplasma mycoides* subsp. *mycoides* SC (contagious bovine pleuropneumonia)
- **Lumpy skin disease**
- Theileriosis
- Trichomonosis
- Trypanosomosis (tsetse-transmitted)



# LSD Preparedness

- Risk Assessment
  - Conduct of IRA on import applications
  - Border Control – issuance of banning of imports of live animals and products from LSD affected countries
- Diagnostic Capability
  - BAI laboratory present status
    - Technical staff and equipment for diagnosis (PCR)
    - Initial stockpile of supplies needed (PCR reagents)
    - PCR protocol established (aligned and in coordination with international reference laboratory)
    - Participated in trainings provided by international organizations
    - Initial stages of developing Ag ELISA capability using commercial kits
  - PCC laboratory primarily for research purposes



# LSD Preparedness

- Surveillance Strategy
  - Risk-based surveillance
  - Integration with other disease surveillance activities (e.g. FMD, CBPP)



# LSD Preparedness

- Public Private Partnerships
  - Initial engagements with government counterparts (i.e. PCC and NDA)
- Collaboration and coordination with partners/donors
  - Attendance and participation with international organizations in different activities (e.g. meetings, workshops, trainings)



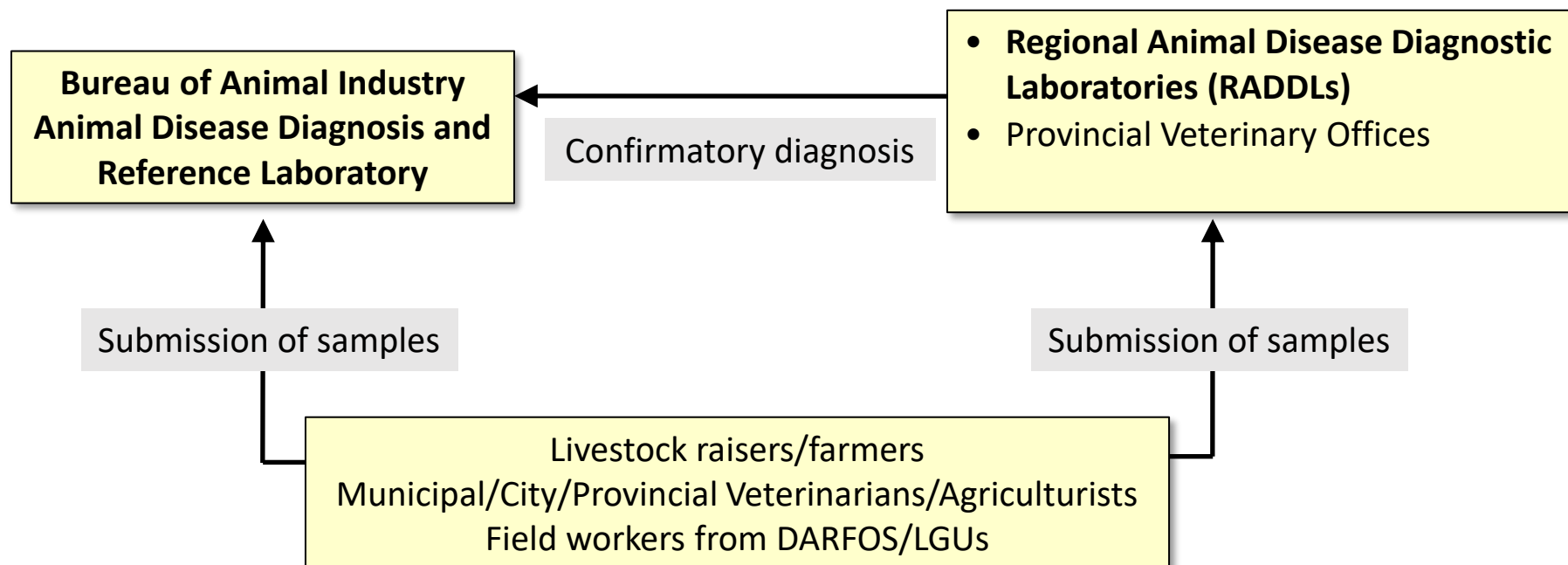
# LSD Preparedness

- Early detection, reporting and response
  - DA Special Order No. 353, Series of 2016 dated March 15, 2016
    - “Creation of Regional Quick Response Team (RQRT) for Disease Events and Emergencies”**
      - To provide immediate response and action to reports of animal disease events and emergencies
      - Composition of team is based upon the recommendation of respective DARFO Regional Executive Directors
      - RQRT works in coordination with LGU counterparts
  - Online training to capacitate veterinarians from BAI (organized by OIE, FAO)
  - Information campaign and dissemination of OIE materials for LSD among the Local Government Units and partners



# LSD Preparedness

- Sample Referral to Reference Lab



- BAI Laboratory has established protocol for sending samples to international reference laboratory



# Challenges

- Present COVID-19 situation affects conduct of field activities
- Devolution of some of the BAI functions to LGUs
  - Readiness of LGUs to absorb additional devolved functions (budget, manpower, technical capacity and **diagnostic capability**)



# Way Forward

- Organize inter-agency technical working group to develop disease prevention, emergency response and contingency plans
- Engagement with concerned industry stakeholders
- Strengthening surveillance, disease recognition and reporting, and laboratory capability and capacity



# Maraming Salamat!